

HOTBOX

ISSUE# 253

JUNE 1990.

\$.83

INTRODUCING
LOCOMOTIVE NEWS



MODELING
THE
CN

"All the News That Fits, We Print"

Teen Association of Model Railroading
TAMR

c/o Lone Eagle Payne
1028 Whaley Road, RD#4
New Carlisle, OH 45344

Editor.....John J Rossi III
Publisher.....John J Rossi III

Associate Editors

Randy Broadwater Newton Venzina
Phil Michaels

Graphic Artists

Peter Schierloh John Rimmisch

Contributing Editors

Phil Michaels Michael Yan
Chris Chamberlin

BILL OF LADING

Locomotive News.....Page 3
CH's Dount Falls & Midlunouare
Division--Part One.....Page 5
Modeling Tips.....Page 7
Editorial.....Page 2

On The Cover: Railroad Picture

Send Articles to the following Editors:

John J Rossi III
6 Beech Court
College Point, NY 11356

Randy Broadwater
519 Cricket Lane
Hockessin, DE 19707

Newton Venzina
54 Boardman Lane
S. Attleboro, MA 02703

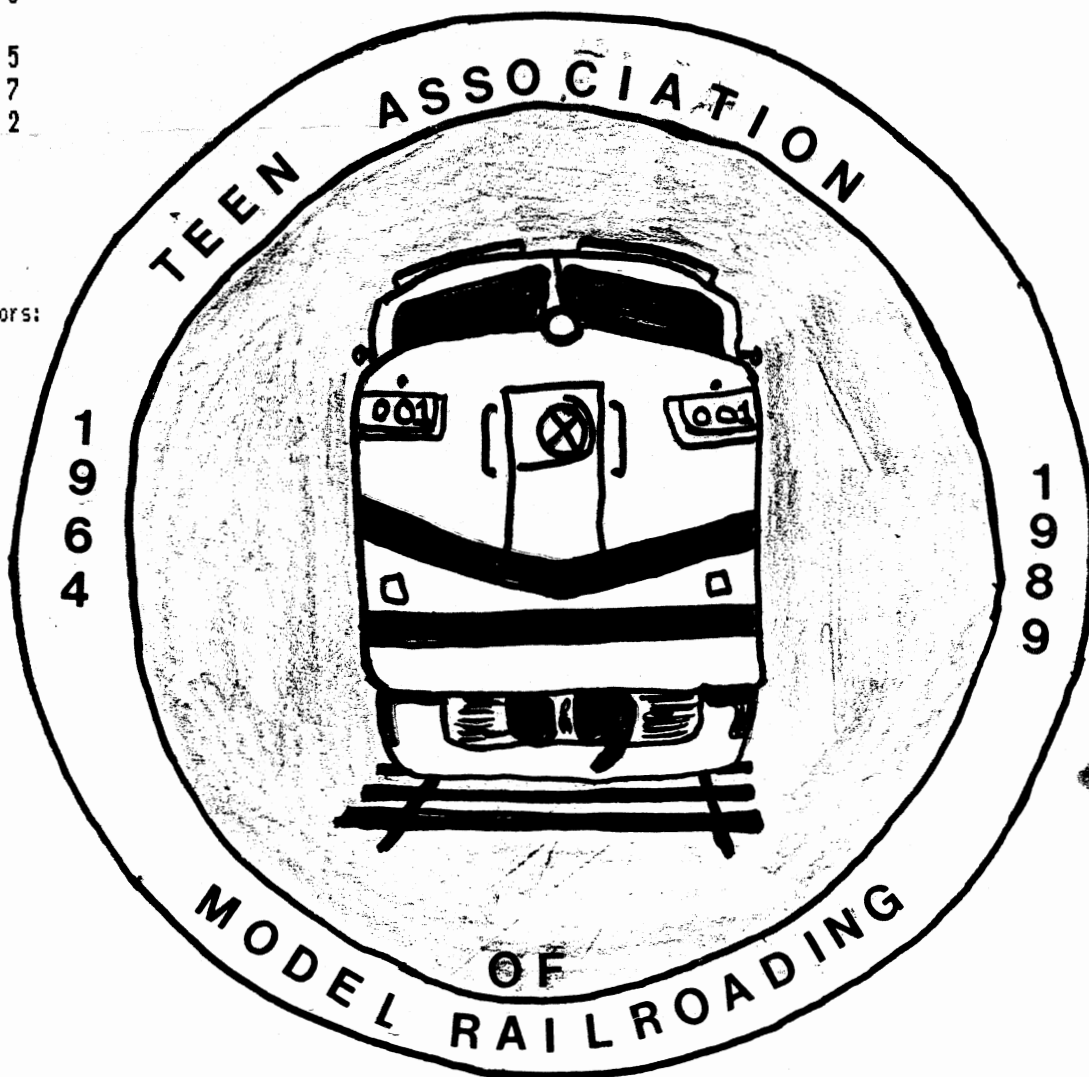
Phil Michaels
522 S. Tompkins St.
Howell, MI 48843

EDITORIAL

Welcome to another issue of the HOTBOX. It has been one year since I took the job of Editor and even though it has been hard it still has been fun. Well hopefully I can continue, but I need your help again. I have run out of articles, and the editors cannot come up with all the stories. Also, what happened to the convention, I have not heard anything. How about the members of the TAMR going to the NMRA Convention, or anything else you can think of. Well here goes another year at the job I hope.

Sincerely yours,

John J Rossi III, Editor



By Phil Michaels

CSX---As of mid-March all four CSX F-units(116-119) were operating.....CSX has picked up an order of 53 Dash8-40C's from GE that were canceled by another railroad, probably Conrail..... On March 19th CSX released B36-7 #5895 from Waycross shops in the official new CSX paint scheme. This replaces the temporary yellow noses and stripes with blue top that was being produced on SD40-2 rebuilds out of Huntington and quite a few GE units from Waycross. The new scheme retains the black trucks and underframes, along with yellow stripes and ends. The blue roof has been taken away, and some sort of blue painted section cuts across the carbody.....CSX SD60 #8709 was returning to EMD at Chicago in February for repairs.....

CR---Conrail's new SD60's numbers 6845-6869 have been running strong since delivery early this year....Many of the Conrail SD40's that were reportedly to be returned to the lessor are still running on the Conrail system.....Conrail may have dropped its next order for Dash 8-40C's (50 units) and these units will go to CSX.....

NS---Norfolk Southern has taken delivery of all its new power in the months 12/89-2/90. GP59's 4609-4641 and Dash 8-32B's in the 3500's series have been running on Northern lines including active use of the Fort Wayne, Indiana to Detroit, Michigan main.....

UP---Union Pacific is currently taking delivery of 50 Dash 8-40CW's. The wide noses are different than the EMD cabs, but still look good.....When it seemed that one might never see a new UP engine north of Little Rock or east of North Platte, the railroad came through for us Chicago going railfans and several Dash 8-40C's and SD60M's have been showing up on through freights and coal trains into Chicago.

BN---BN also has been taking new power deliveries of SD60M's numbers 9200-9249. The order was completed around mid-March.....



atlas
s n
o
ho
N
lgb

page 3 con't

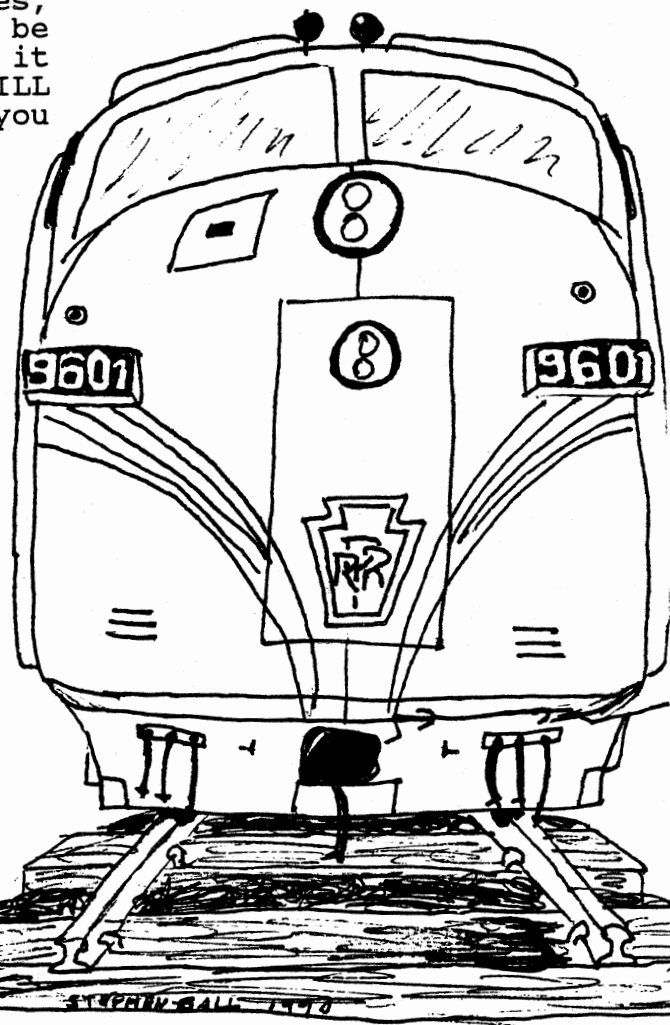
SP---Cotton Belt GP60's 9668 and 9670 (order of 50; 9665-9714) were enroute on CP/SOO container train 501 (CSX R-201) on March the 17th. As of March 31st, 9665-9685 and 9687 had been or were being delivered.....Rio Grande GP60's (an order of three) should be delivered in May.....

SF---Santa Fe hasn't had allot of new power lately, but it has been the old power attracting railfan's attention. Six F45's have been painted in the Santa Fe classic red and silver warbonnet scheme.....SF though, will be taking delivery of 60 Dash 8-40BW and 40 GP60M's this summer in the red and silver scheme.

All the news for this column has come from me, and railroad magazines I subscribe to. I would like to make this a bi-monthly, or tri-monthly article for the HOTBOX. However, I cannot continue to write this column on my own, as I have already exhausted my own supply of information. If you have any information pertaining to locomotives, new power, or old, that would be interesting to readers, please send it to me at the following address. You WILL be mentioned for the information you give to me:

Phil Michaels
Locomotive News Dept.
522 S. Tompkins Street
Howell, MI 48843

A Pennsy
F-unit awaits
repair in front
of the shops
in Altoona, PA



By Mike Yan

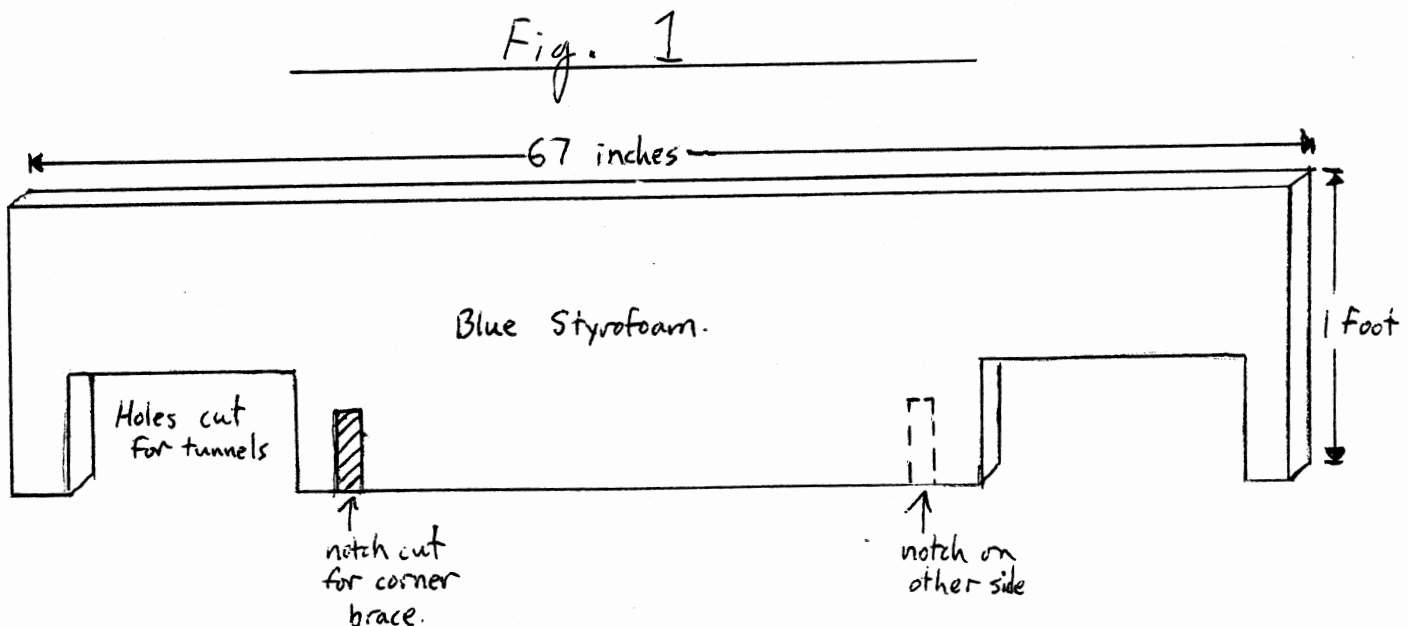
My HO scale CN Downt Falls and Midluvnoware Division was intended to be strictly a CN layout, but I soon realized that exclusively, CN trains don't exist! Consequently, the layout sees plenty of foreign traffic (mostly CP rail). The fictitious layout's main purpose is shipping grain and industrial products from Downt Falls to Midluvnoware and bringing empty cars back to Downt Falls. The DF&M also serves the daily commuters of both towns with its passenger train. STRUCTURES

The structures on the DF&M are all inexpensive plastic kits. Since I only model downtown Downt Falls and downtown Midluvnoware, most of my buildings are businesses, with only one house which is Midluvnoware. However, I hope to scratchbuild one or two houses in the near future. The plastic kits look a bit clean out of the box, but weathering them with chalk dust improves their appearance tremendously.

THE BACKDROP

Due to space limitations, a double-sided backdrop was necessary

to separate the two towns. The first step was to cut a sheet of 3/4 inch blue styrofoam into a piece with the following dimensions 1 foot x 67 inches long. (See Figure 1) Then, I cut out two large holes where the tracks will go through. The backdrop is supported by two small corner braces, one at each end. To mount the braces I used a file to cut a notch into the styrofoam just deep enough for the brace to fit. Next, I used several layers of masking tape to hold the brace in place. I used two Instant Horizons® printed scenes (distributed by Walthers) to make the actual backdrop. The printed backdrops are two feet high, so I cut them down to one foot and saved the leftovers for a later step. The three foot long sheet was mounted in the center of the styrofoam sheet with double-sided tape. Since the styrofoam sheet is over five feet long, the leftovers mentioned earlier were used to fill in the ends. The same procedure is used on the other side. (Remember to cut the holes for the tracks.) The completed backdrop was mounted diagonally across the layout. Because of the lightweight



styrofoam, a piece of masking tape over the braces will be sufficient to hold it in place.

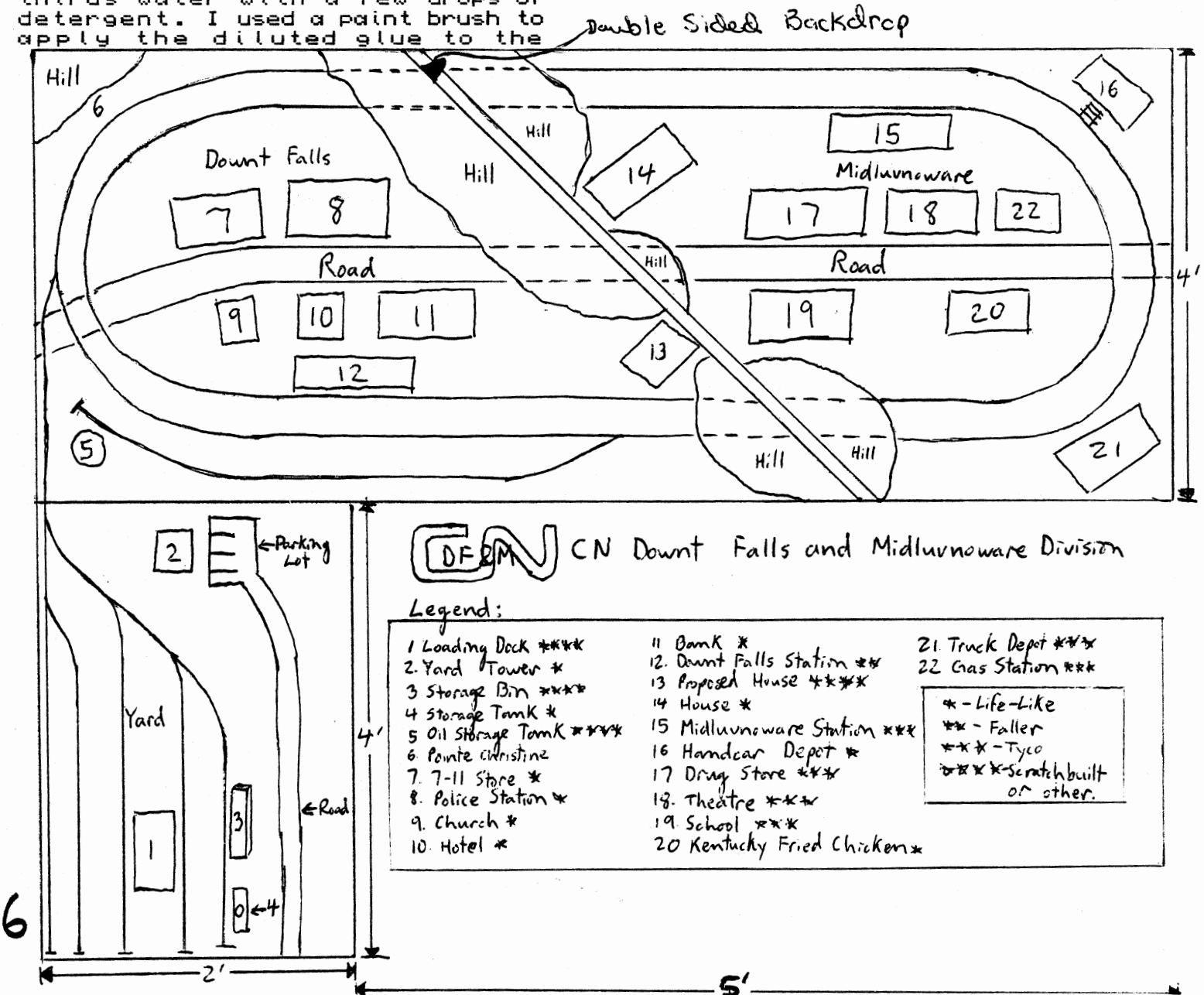
SCENERY

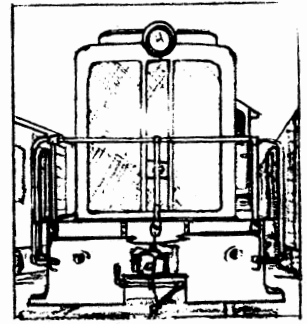
The hills rising up to the backdrop were all made with the plaster hardshell method. (See Dave Frary's "How To Build Realistic Model Railroad Scenery" from Kalmbach) These hills will be painted with an earth colored latex paint with lots of grass and Lichen[®] thrown on. The hill at Pointe Christine was carved out of white styrofoam. Several pieces of styrofoam were laminated together to form a block, which was then carved with a razor saw and file.

All the ground cover is Woodland Scenics[®] ground foam. I used Woodland Scenics[®] T45 green grass, T49 blended turf, and T42 earth. The ground foam was fixed with a mixture of one third white glue and two thirds water with a few drops of detergent. I used a paint brush to apply the diluted glue to the

plywood and immediately sprinkled the ground foam on top.

That's all for this month, see you next month with Part Two.





**PAINTING PLASTER ROCKS:
A FAST, EFFECTIVE METHOD**
by Chris Chamberlin
Pelican, LA

Have you been searching for a way to paint plaster rocks faster and more efficiently, with better results? Then this method is just the thing for you. The equipment you need consists of a disposable all-purpose sprayer (like those used for spraying water or weed killer), a small mixing dish, and liquid detergent.

To color the rocks, I use artist's acrylic water-soluble colors such as burnt sienna, raw sienna, burnt umber, raw umber, and sable brown (or any other brown).

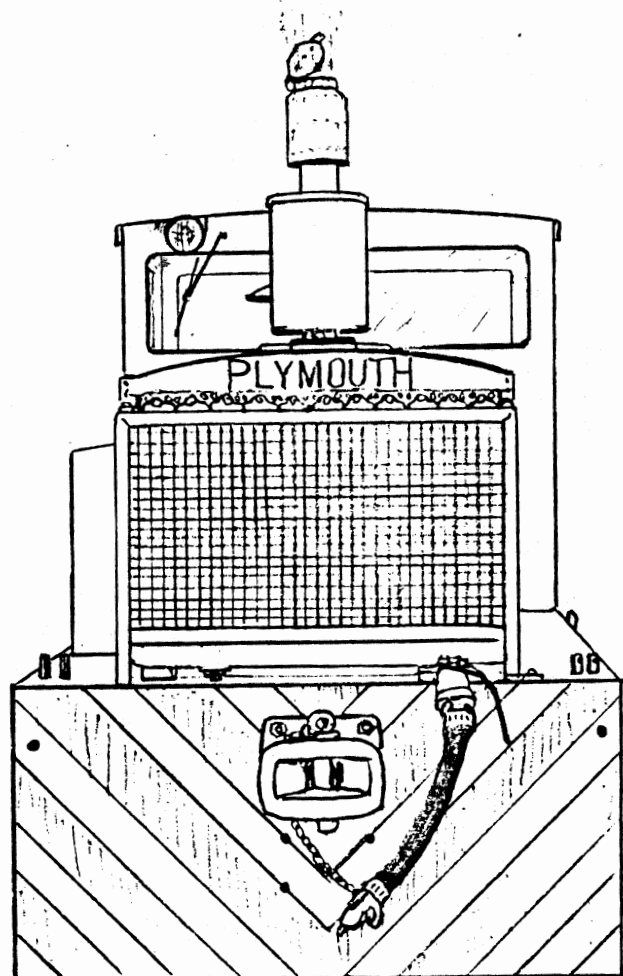
To prepare the paint, mix a small amount (2 or 3 good squeezes) with a little water. When the paint is completely dissolved, pour it into the spray bottle and add a few ounces of water, along with a drop of detergent to keep the check valve free.

Now you can spray the paint on the plaster rocks. I just spray it on until it looks right. As the paint dries, which doesn't take long, the plaster absorbs the water.

To add some color to the rocks, you can highlight them with blue, grey, red, yellow, and other colors. Just brush some paint on here and there; not too much, just enough to give the rocks some variation in color. Hit the paint with a blast of clean water from the spray bottle so the wet paint runs into the cracks and crevices. When that dries, mix a weak solution of India ink and water, put it in the spray bottle, and spray the rocks again to highlight the cracks.

Your rocks should turn out looking great, like mine did. Good luck and have fun; that's what model railroading is for!

[Editor's note--Chris is new to the TAMR, but he's already gotten into the spirit by writing an article. Let's hear from the rest of you!]



SUBMITTING TO TAMR HOTBOX

+++++

STYLE, CONTENT--Your own writing style is fine with us; remember, you are among friends. Grammar trouble? Let the editors worry about that. The ideas are what is important. As for content, we will accept anything on modeling, painting, scenery, electronics, layouts, and the prototype. Make sure the subject will be interesting to most readers.

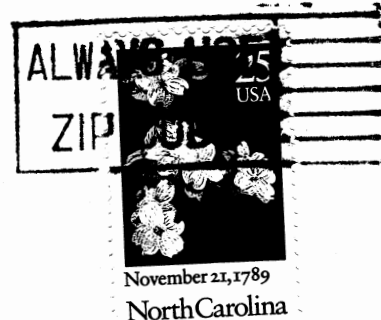
TYPING--Although typing is not required, it will save the eyes of the editors. **HOTBOX** columns are 35 spaces wide, for two columns on a page. If you cannot type your article, print it (double-spaced) on lined paper.

ARTWORK--Must be in **BLACK INK ONLY** (pen or fine-tip marker; no pencil). If you require drawings to accompany your article, they can be done by our Graphic Artists from your detailed sketches. Please include a scale measure for scale drawings.

PHOTOGRAPHS--**BLACK & WHITE ONLY**, glossy finish, no larger than 4" x 5", no smaller than 2" x 2" or 3" x 5". All photos must be accompanied by caption material, especially cover material.

1990 TAMR/HOTBOX Official Publication
1990 A ROSSI Production

TAMR HOTBOX
c/o TAMR Secretary
Matt Heiman
38-15 Statford Lane
Louisville, KY 40207



FIRST CLASS MAIL

DATED MATERIAL--PLEASE HURRY--