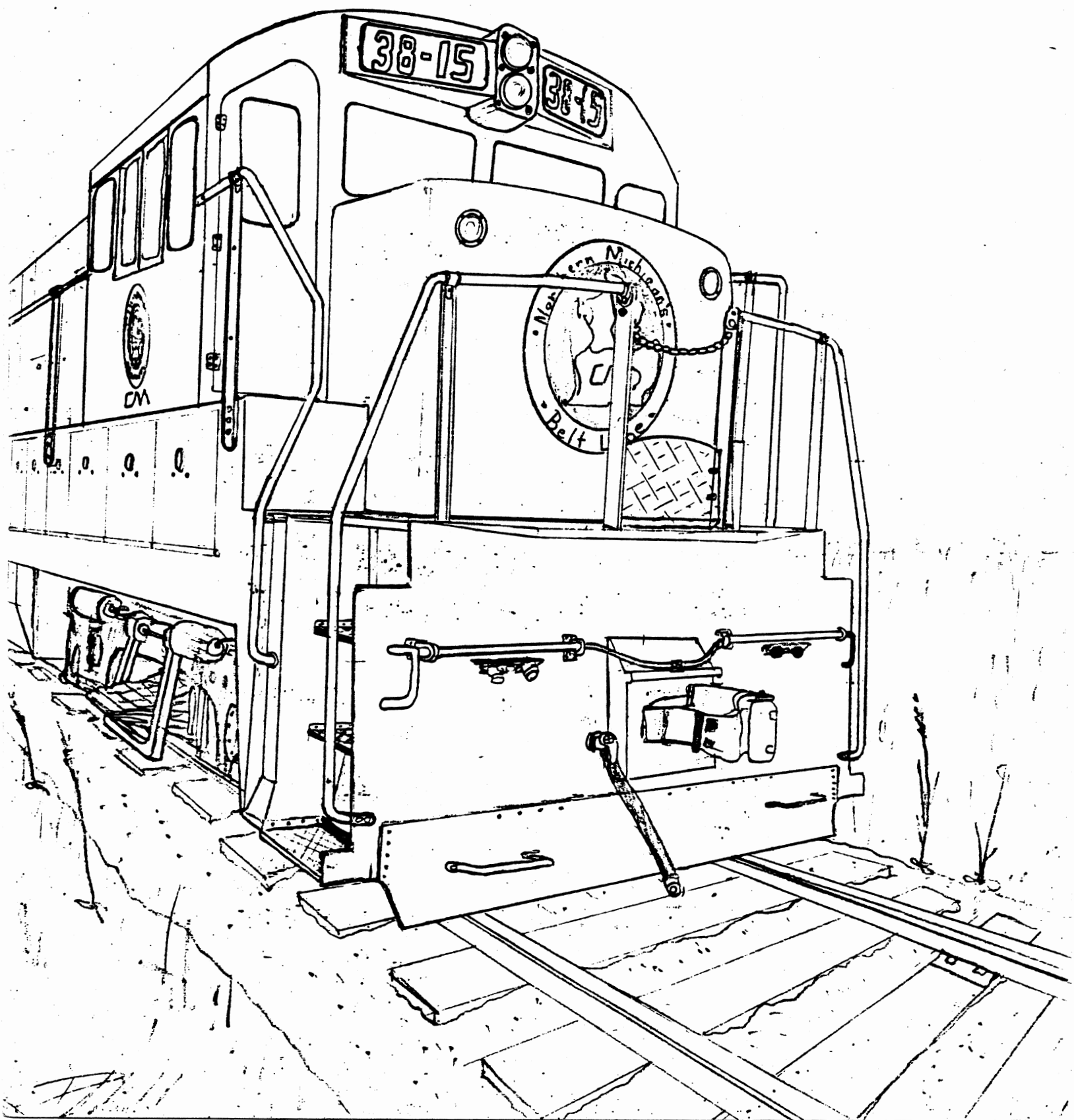


HOTBOX

Issue #249

February, 1990

\$.83



"All The News That Fits, We Print"

Teen Association Of Model Railroadin9

TAMR

c/o Lone Eagle Payne
1028 Whaley Road, RD#4
New Carlisle, OH 45344

Editor & Publisher..... John J Rossi III

TAMR Advisor John Reichel

Associate Editors

Randy Broadwater Newton Vezina Jon Webster

Graphic Artists

Peter Schierloh John Rimmisch

Contributing Members

Chris Bryant Matthew R. Heiman Jon Webster

Conrail Historical Society John Reichel Steve Schwenk

Newton Vezina

General Information

(As of December 31, 1989)

Current Number of Members 110
Total Number of New Members This Year 71
Total Number of Expirations 149

Members Distribution By Region

Canadian Region 6.3%
Central Region 33.6%
Northeastern Region 28.18%
Southern Region 16.36%
Western Region 15.45%

BILL OF LADING

Book Review, Notes from the Secretary, Page 3
Train Orders, Product Reviews,
Notes from Promotion Dept.Page 4
Railfanning Photos Page 5
TAMR Fiancial Statement Page 6
TAMR Promotion Flyer (Members make copies) Page 7

On The Cover

By Peter Schierloh

The future is here, with exPanding track purchases and a new image; Central Michigan R.R. became a major power of the Northern Michigan farmlands. The quietness of a farmer's field is shaken by the mighty power of the recently acquired B30-7 on the morning of July 3, 1943. She is headed for Traverse City.

"The ABC's Of Model Railroading"
Kalmbach \$6.75

This is the ideal book for beginners. It covers everything you need to know from Power Packs to benchwork to track laying to assembling freight cars. This book contains 71 pages of all you need to know to begin model railroading.

It also includes, a very informative chapter on how to run your railroad in a realistic manner, and also choices of different features that you may want on your layout. The book is in easy to read, with many illustrations. I think "The ABC's of Model Railroading" is a good buy for the novice beginner, or even the experienced veteran.

Book Reviews By Chris Bryant



Notes From The Secretary
Matthew R. Heiman

***The TAMR is having a terrible drop in membership. The best way we can combat this is for current members to renew their membership. Also, the TAMR is looking to recruit new members. If you have a friend who might be interested, let him/her know about the TAMR. Have them send questions to:

Lone Eagle Payne
1028 Whaley Road, RD#4
New Carlisle, OH 45344

***If anyone is interested in receiving a copy of the TAMR Constitution Please send two \$0.25 stamps to:

Matthew R. Heiman
TAMR Secretary
3815 Stratford Lane
Louisville, KY 40207

***Lastly, the TAMR is need of volunteers for many areas. This is YOUR ORGANIZATION, so get involved.

**SEND ARTICLES TO ANY OF
THE FOLLOWING EDITORS:**

John Reichel
288 Whitmore St #201
Oakland, CA 94611

Newton Vizina
54 Boardman Ln
S Attleboro, MA 02703

Jon Webster
PO Box 743
N Conway, NH 03860

Randy Broadwater
271 Mowrey Hall
Shippensburg University
Shippensburg, PA 17257

Attention Members,

On April 1, 1990 we will be founding the Conrail Historical Society. We have been in communication with Conrail and have their good wishes in the venture.

However, they don't want to help in any - so...

Friends, we need slides, photos, and short articles about Conrail. We will pay 5 cents per word for the articles, and up to \$10.00 for slides and photos. B/W photos are fine too. Slides can be returned.

Always enclose a stamped return envelope just in case we don't use the material you send.

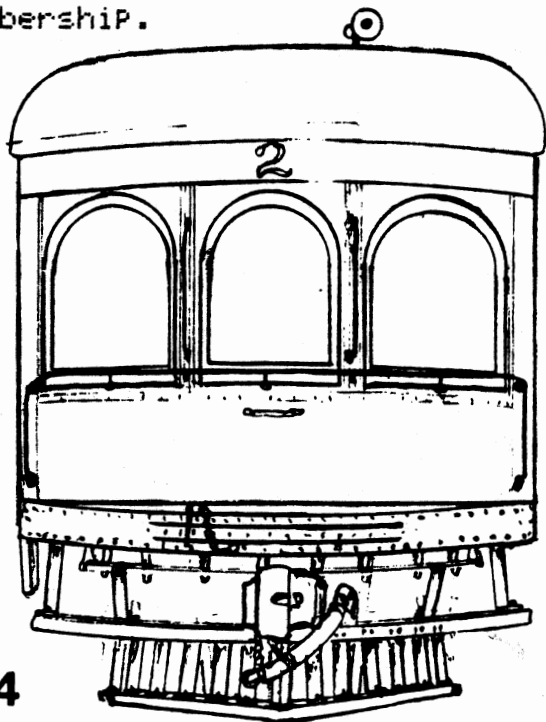
Sincerely yours,

Chas & Elsie Montano
Conrail Historical Society

P.O. Box 1011
St. Johns, AZ 85936

Notes From The Advertising Dept.

***Please make copies of the enclosed flyer on page 7, and distribute them to friends and local hobby shops, and anywhere else you think that teens will look. This is very important in regards to our declining membership.



4

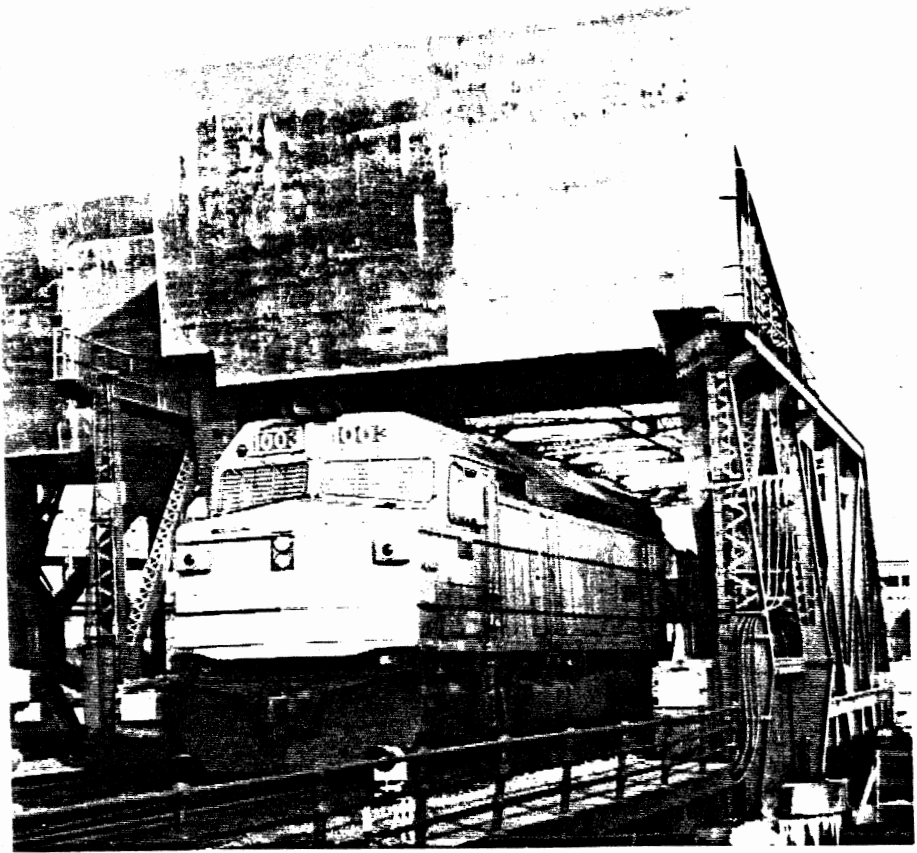
PRODUCT REVIEW: ATHEARN GP40-2 by John Reichel

Athearn has a history of promoting some products that are no longer available and not promoting others that are. They still put their steam engines, unavailable for about 25 years, on their boxes, as well as the discontinued RDC, Lil Hustler diesel switcher, and various long-gone freight cars, and bless 'em for it. I like those boxes. They publish ads for the PA1--I just wish I could buy one! Haven't seen a new one in years. And their latest ads feature the "newest addition to the roster": the two-year-old GP50.

It's not. The Athearn GP40-2 was introduced in December with little fanfare, and it's a nice model. Mechanically, it's identical to their GP50 and GP38-2. That is, it's powerful and smooth-running and can be easily modified to run even better. The detail on these inexpensive diesels is amazing. Look at the fan blades. And there are no molded-on handrails to frustrate your super-detailing efforts. If the overly wide hoods and lack of fine detail in some older models, such as the GP9 and SD45, has pushed you away from Athearn, look again. The more recent SD40-2 and T-2 are nice too, but the newest Geeps take the cake.

The GP40-2 is found on many railroads. The model is offered with a choice of six roadnames, plus undecorated versions with or without dynamic brake detail. A simple conversion can make it a GP40. At \$30 (\$15 for dummy), the GP40-2 is more expensive than other Athearn diesels but is still a great bargain--much less than other high-quality plastic units. Check it out.

And, if you're listening, Athearn, let's have some of those discontinued models back! And scale-width hoods for the rest!



RAILFANNING PHOTOS

by Jon Webster

← Boston, MA (T) F40 #1003

E. Deerfield, MA
↓ EDWH Power 367-360
342-341



Teen Association of Model Railroaders
 1028 Whaley Road, R#4
 New Carlisle, Ohio 45344

Steve Schwenk, Treasurer
 7-7 Ross Ade Dr.
 West Lafayette, IN 47906

Financial Statement: January 1, 1989 - January 1, 1990

January 1, 1989 Checking Balance	\$ 299.15
January 1, 1989 Savings Balance	\$1490.13
January 1, 1989 Balance (Total available funds)	\$1789.28

January 1, 1989 Balance	\$1789.28
Income (January 1 - December 31, 1989)	\$ 771.61
Expenses	<u>\$1446.73</u>
Balance	\$1114.16

Transfer of Funds to CD Accounts (Mature February, 1990)	\$1000.00
January 1, 1990 Checking Balance	\$ 105.00
January 1, 1990 Savings Balance	<u>\$ 9.16</u>
January 1, 1989 Balance (Total Funds)	\$1114.16

Analysis of Income:

Membership Dues	\$ 714.50	92.60%
Advertising in <i>Hotbox</i>	\$ 16.30	2.11%
Dividends	\$ 30.47	3.95%
Savings	\$ 10.34	<u>1.34%</u>
Checking		
Total Income	\$ 771.61	100.00%

Analysis of Expenses:

1989 Membership Directory	\$ 162.45*	11.23%
Check Fees	\$ 30.00**	2.07%
Check Discounts	\$ 7.01	0.49%
<i>Hotbox</i>	\$ 1129.97	78.11%
Misc. Postage (TAMR Officials)	\$ 40.80	2.82%
Office/Computer Supplies	\$ 12.50	0.86%
Lone Eagle Payne Promotionals	\$ 64.00	<u>4.42%</u>
Total Expenses	\$ 1446.73	100.00%

* Remainder of outstanding debt to be paid by S. Schwenk.

** Funds to be reimbursed by S. Schwenk on 1990 fiscal year.

DISCOVER MODEL RAILROADING

** JOIN THE TAMR **

The **Teen Association of Model Railroaders** is dedicated to introducing teens to others in the hobby and helping them with their modeling questions. The following is available to all TAMR members:

- * make new friends
- * exchange & railfan with fellow teens
- * attend yearly conventions
- * get a yearly issue of the member directory
- * get issues of the **HOTBOX**, the official publication of the TAMR
- * get involved and have fun!!!

For more information write or mail the short letter provided at the bottom of this flyer to:

TAMR
c/o Lone Eagle Payne
1028 Whaley Rd.,RD#4
New Carlisle, OH 45344

Hello !!!, my name is _____ and I reside at
(address) _____ in
(city, state,zip) _____

I am interested in becoming a member of the TAMR and would like to know more about the many benefits and the related yearly membership fee. Please send all information to the above address. Thankyou !!

Mail to: **TAMR**
C/O Lone Eagle Payne
1028 Whaley Rd.,RD#4
New Carlisle, OH 45344

TAMR Promo.Dept., February 1990
NAV/CJB '90'

SUBMISSIONS
+++++

STYLE, CONTENT--Your own writing style is fine with us; Remember, you are among friends. Grammar trouble? Let the editors worry about that. The ideas are what is important. As for content, we will accept anything on modeling, painting, scenery, electronics, articles about layouts, and prototype articles. Make sure it will be interesting to most all readers.

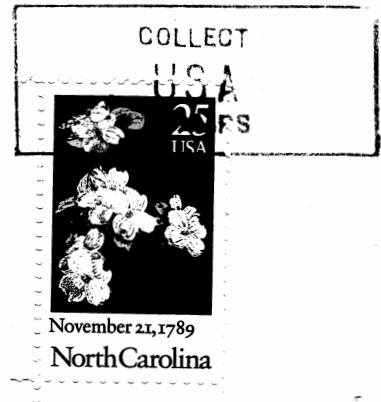
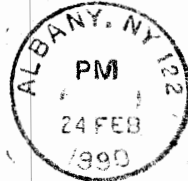
ARTICLES--Although typing is not required, it will save the eyes of the editors. The HOTBOX columns are 35 spaces wide, for two columns on a page. If you cannot type it, then print it on lined paper double spaced.

ARTWORK--Must be in BLACK INK ONLY (pen, or fine tip marker. No pencil). Drawings required to accompany articles can be done by the Graphic Artists if detailed sketches, or ideas are provided. If it is a scale drawing, please include a scale measure.

PHOTOGRAPHS--BLACK & WHITE ONLY, glossy finish, not larger than 4" x 5", no smaller than 2" x 2" or 3" x 5". All photos must be accompanied with caption material, especially cover material.

1990 TAMR/HOTBOX Official Publication
1990 A ROSSI Production

TAMR HOTBOX
C/O TAMR Secretary
Matt Heiman
38-15 Statford Lane
Louisville, Kentucky 40207



FIRST CLASS MAIL

DATED MATERIAL--PLEASE HURRY--

