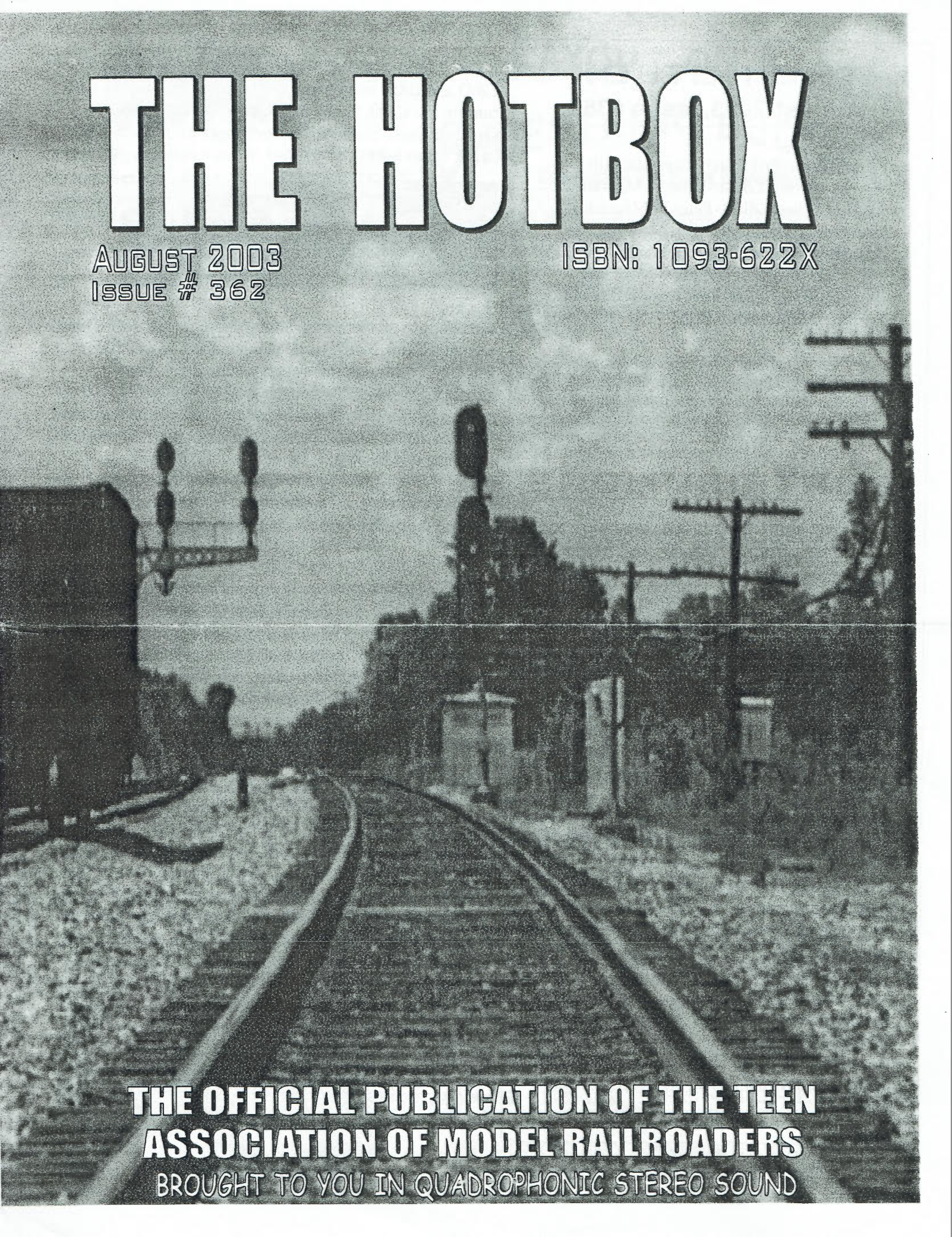


# THE HOTBOX

AUGUST 2003  
ISSUE # 362

ISBN: 1093-622X



**THE OFFICIAL PUBLICATION OF THE TEEN  
ASSOCIATION OF MODEL RAILROADERS**  
BROUGHT TO YOU IN QUADROPHONIC STEREO SOUND



# THE HOTBOX

## August 2003, Issue #362

**Editor/Publisher-**Peter Maurath

**Executive Editor-**Peter F. Maurath

**Managing Editor-**Peter F. Maurath II

**Senior Editor-**Peter F. Maurath III

**Associate Editor-** Sr. Peter Maurath Esq. IV

**Art Director-**Dr. Peter Maurath

**Graphic Designer-**Rev. Peter F. Maurath

**Technical Illustrator-**Bo the TAMR Wonder  
Dog

**Photographer-** O Winston Maurath

**Librarian-**“That’s the person behind the desk at the library who tells you where to find that book on llamas.”

## CONTRIBUTIONS

Send your check or money order to my ,... oops sorry,... you mean that type of contribution. We here at the Hotbox are always in need of new material. Here are a few examples:

### Feature Articles:

This is what we’re always looking for. From a railfan trip, to your home layout’s story, or your own story. Size can range from a paragraph to a full page. Pictures are always appreciated.

### Columns:

Full of great tips on layout improvement? Got a million reasons why EMD is better than Alco? Start a monthly, or bi-monthly column. Size same as features.

### Photos and Drawings:

Got a great photo collection you want to show off? Got a notebook full of rr cartoons, or unique logos, send them to the HB staff for consideration.

**Send all submissions, or Hotbox questions to:**  
Peter Maurath

### Or email at:

[TAMRHotbox@aol.com](mailto:TAMRHotbox@aol.com)

(If sending via email, please put text of articles in email, to prevent format errors, pics should be fine)

**ON THE COVER:** Not a train in site at the former C&O and B&O interchange in Vaues, OH. Today CSX runs on the C&O, (track in center of cover), while the shortline Great Miami RR interchanges from the old B&O (track off to left).



Greetings to all members. I would like to start off with a great “Thank You”, to all you members who have stuck by us through this rough patch. It has been almost eight month’s since the last Hotbox left the presses. After that, it was handed off to Louis Granato III, who sadly, was unable to keep it going. After much hemming and hawing, I, Peter Maurath, guru of the hobby shortcuts, have been appointed as Editor/Publisher (and everything in between), until another lucky stiff comes along that can actually do the job.

In case you haven’t noticed there have been a few “mild” changes. For starters, the HB has been put on a considerable diet. It is now a four page publication. Due to my busy schedule, lack of material, and publishing costs, this slim down was done. There is always the possibility of expansion, if any of the above factors change. Next, content. Most of the columns have been axed, this due partly to lack of participation, and the fact most were just plain boring. Finally, the envelopes are dead. Once again due to cost and time.

The Hotbox is without a doubt the lifeblood of the group. It’s keeps all members in the loop, and lets them see what there \$15-18-20, is paying for. It makes sense then why this group has frankly been in a free-fall for the last year and a half. It got so bad this year the National Convention this July had to be canceled due to lack of interest. Almost half of our TAMR Board postions presently sit open. **This is going to change.** Starting now with a newly invigorated HB, coming to you every month (forgot to mention, it’s back on a monthly schedule again) like clockwork and connecting you with teens from all over the country. These are not empty promises, I mean, hey, I’ve lasted over ten years in this group, so I’m definetly not going anywhere.



# The Top 7

## TOP 7 MESSAGES HEARD ON RAILROAD DEFECT DETECTORS.

Expertly created by: Nick Wilson, superbly finished by:  
Peter Maurath

#7. "Norfolk Southern defect detector, milepost 190.5, OH-NOOOOO, run for your lives!!!!!"

#6. "BNSF defect detector, milepost 3.14159265..."

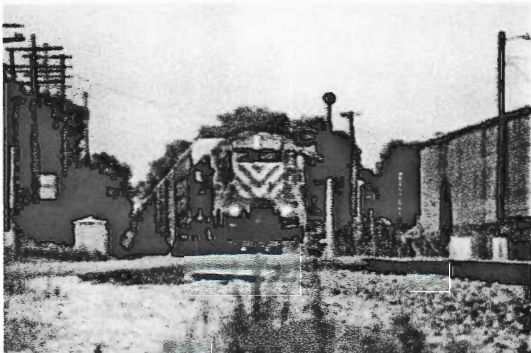
#5. "New York Central, no Penn Central, no wait Conrail, no that's not right, CSX?, oh shoot, what railroad is it this week?"

#4. Union Pacific Defect Detector milepost 214.5, no defects, total axle count 312, Wednesday June 14, time 3:15pm, weather: clear, 71 degrees, wind out of northwest, 5 knots, Dow Jones holding at 8 eight thousand, NASDAQ dipped below two, Ohio state beating Miami 27-14, in other news...."

#3. "Canadian Pacific defect detector, please hold for menu items. For milepost press 1, for axle count press 2, if you are reporting a defect press 3, if you do not have a touch-tone phone, please stay on the line, your defect is important to us."

#2. "Penn Central defect detector, milepost 490.5, no de- 'click' de- 'click' de-'click' de-'click' fects, tofal achwell cound 2...1...4...4...4...4...4..."

#1. "CSX defect detector, milepost 148.1, no defects, total axle count 244, help me I've been demoted to reading these things all day, let me out of this little box!"



A CSX train with FURX #3026 on the point rolls thru Troy, OH, July 22<sup>nd</sup>.

# LAYOUT ON A SHOESTRING BUDGET

Conducted By: Peter Maurath

Celebrating ten plus years of noodlemania, it's LOASSB! I'm back with the first new column for year eleven. Starting this year, I (and my trusted colleague CZ) will take your questions and comments, and insult...I mean inquire as to the best way to solve them for you. This new "spinoff" of LOASSB will be replacing it for the most part. Just not enough hours to do everything. Look for it next month. Now, on with the show!

This month's tip: inexpensive railings in multiple scales. You've heard me go on and on about the many uses of the beloved pasta noodle. Well, prepare to be hit again, as I give you use number 876. You'll need some wood, or styrene square doweling no more than 1/8" square, spaghetti noodle, various colors of model paint (flat concrete, and a dark flat red for example), and glue, either CA (super), model, or white.

Start by painting your dowel a flat concrete color, this will become the vertical support posts of your railing. Paint a few strands of noodle dark red (color is changeable) these will be the horizontal sections between the posts. Once both are dry, you can begin assembly. Begin by cutting the posts to your desired height, for an N scale railing you'll want them about 1/2" tall. Then, cut your noodles to make up the horizontal pieces. This, again depends on you, and how long of a railing you need to make. You'll need to measure your railing deprived area and do a little math to get the exact width for the noodles. You could also do what I do, and guess a width that looks good, than trim the end off later if it overhangs later. Just beware the prototype police.

Once you've figured out all of your calculations, ruminations, and deviations, begin assembly. Make sure you have a clean, smooth work surface; less chance of the drying railing sections sticking to the surface. If you can use a fast setting glue (CA), do so, as assembly will go by much faster, if your stuck with elmers, don't make any long term plans. Place the first drop of glue where you want the top cross noodle to run. Set the cross noodle in place, let it setup a few seconds, than repeat a little lower where you want the second cross noodle to run (You can add more cross noodles if you like, depending on how tall your railing is). Once setup, add drops of glue to the ends of noodle (opposite the post you just glued them too), then add your second post, matching the height as best as possible to the first one. Repeat the process, until you've reached the desired length for your railing. If you plan on building a lot of these, a jig might be a good idea. Once the glue has thoroughly dried, add drops of paint to the tops of the posts, let dry, then add to your layout. Weathering is a good idea, and can be done with chalks, or paint.

## THIS ISSUE SPONSORED BY:

THE ROCK ISLAND TRANSPORTATION CO.  
"WE BRING IT TO YOU IN BANKRUPTCY BLUE"

THE TAMR IS A NON-PROFIT ORGANIZATION CREATED TO PROMOTE, FOSTER, AND ENCOURAGE YOUNG PERSONS IN THE HOBBY OF MODEL RAILROADING, THE ACTIVITY OF RAILFANNING, AND THE PRESERVATION OF THE HISTORY, SCIENCE AND TECHNOLOGY THEREOF.

MEMBERSHIP TO THE TAMR INCLUDES AN ELEVEN MONTH SUBSCRIPTION TO THE HOTBOX, THE ANNUAL DIRECTORY OF MEMBERS, QUARTERLY REGIONAL NEWSLETTERS AND AN INVITATION TO PARTICIPATE IN ALL TAMR EVENTS. THE AVAILABLE MEMBERSHIP CATEGORIES ARE AS FOLLOWS: REGULAR (UNDER 21)-\$15, ASSOCIATE (21 AND OVER)-\$20, INTERNATIONAL (OUTSIDE US)-\$18

TO BECOME A PART OF THE TAMR OR TO RENEW SEND YOUR INFORMATION TO:  
NICK WILSON, TAMR TREASURER,

OFFER GOOD WHILE SUPPLIES LAST, SEE STORE FOR COMPLETE DETAILS, NO PURCHASE NECESSARY, VOID WHERE PROHIBITED. FOR A COMPLETE LIST OF RULES, REGULATIONS, AND THE BEST DARN RESTAURANTS IN STURTEVANT, WI SEND A SASEBDR TO THE ABOVE ADDRESS. IF YOU ARE AT ALL UNSATISFIED WITH THE HOTBOX PLEASE RETURN UNUSED PORTION FOR A COMPLETE BLOW-OFF BY OUR STAFF. THANK YOU!

## COMING SOON TO THE HOTBOX:

Photography on a Shoestring Budget, returns!



News updates from the NJT, and around the world!



"Ask the Noodle Guys"

## COMING SOON TO THE TAMR:

THE 2003-2004 TAMR Directory. Mail addresses we got, what we need from you is email, Scale you model, layout name, and era. Send in your info now to the address listed inside the cover.



**TAMR HOTBOX**