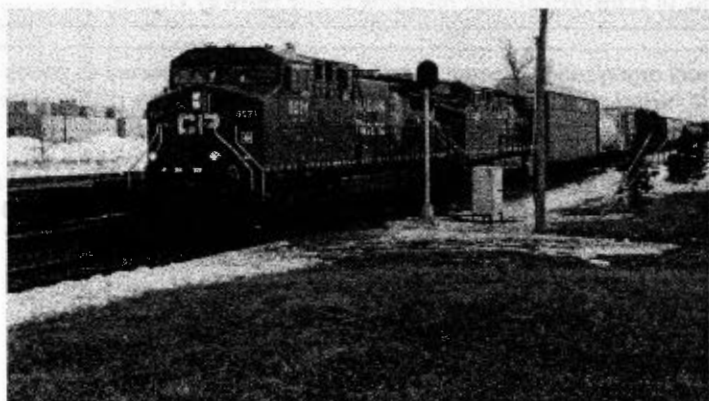


THE HOTBOX

Youth Model Railroading at its Finest!

**September 2001
Issue #350**

ISSN 1093-622X



**Twice the LOASSB!
Brand new News
and Reviews
sections!**

**THE OFFICIAL PUBLICATION OF
THE TEEN ASSOCIATION OF MODEL RAILROADERS**

The HotBox

September 2001
Issue 350

Send Articles to:
Charles Warczinsky

Editor:
Charles Warczinsky
charleswacinsky@mail.com

Layout Design Artist:
Andy Inerra
Andy_Inerra@tamr.org

Contributions!

We always need contributions in all forms. Please send the following in if you wish for the staff to consider for an upcoming issue of *The Hotbox*.

Feature Articles:

This is what we really need. They can be from a half page to two pages typed on anything related to railroading, railfanning, model railroading, you get the idea. Accompanying pictures are also welcome.

Columns:

Another thing we can always use! If you wish to start one, please drop us a line. And if you like a current column, please let the staff know, we like the feedback.

Photos and Drawings:

Do you have great pictures collecting dust? Railroading cartoons just sitting around? Drawings just waiting to be great works of art? Well send them in for consideration by us! Photos should be 3in x 4in minimum. Artwork should be on plain white paper with black ink.

Questions?

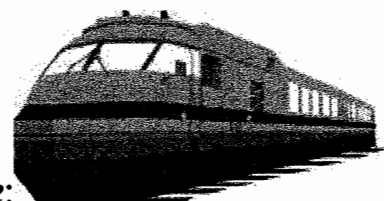
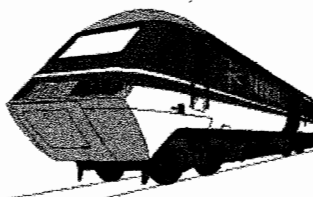
Ask the editor for more info.

On the Cover:

BN SD60M 9249 leads two Santa Fe units and another BN unit on a grain train through Glyndon, MN, on 5-2-00.

Inset CP AC44s pick up speed out of Shoreham Intermodal complex in Minneapolis with train 429 to Edmonton on a chilly March day during the 2001 Great Plain Division spring meet.

Both photos by Nick Olek.



Inside this Issue:

Features:

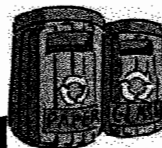
- TAMR Membership goes electronic Page 4

Columns:

- Top 7 Page 5
- LOASSB Page 7
- LOASSB Page 8
- Ask Geep M Page 8

Departments:

- From the Tower Page 4
- A word from the Editor Page 5
- A word from the Layout Design Artist Page 5
- Directory Page 6
- Events Calendar Page 9
- TAMR News Page 10
- TAMR Reviews Page 11
- TAMR on the Web Page 12



Please Read and Recycle

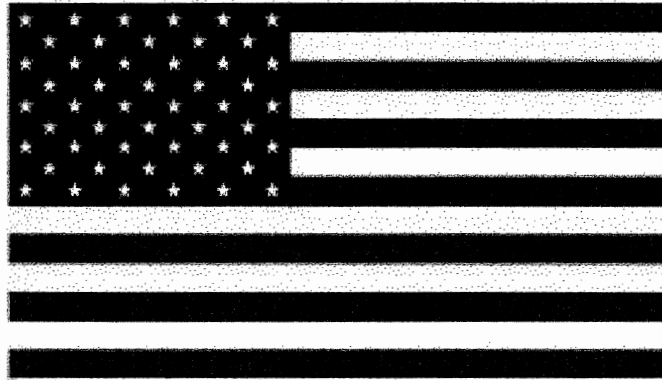
Thanks to rrhistorical.com for some of the railway clipart.

The TAMR is a non-profit organization created to promote, foster, and encourage young persons in the hobby of model railroading, the activity of railfanning, and the preservation of the history, science and technology thereof.

Membership to the TAMR includes an eleven issue subscription to the *Hotbox*, the annual directory of members, quarterly regional newsletters and an invitation to participate in all TAMR events. The available membership categories are as follows:

Regulars (under 21).....\$15
Associate (21 and over)....\$20
International (outside US)..\$15
Sustaining.....\$20

Please send membership to:
Hans Raab, TAMR Treasurer,



Like so the millions who were affected in the tragic events this month,
our hearts are heavy with sadness.
To all the victims, we shall never forget.
To the police, fire and rescue crews, and all who
have given support, we say thanks.



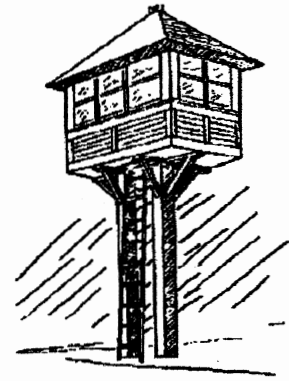
The TAMR Cares

From the Tower

By Chris Burchett

President

Due to space constraints *The Tower* took a break for this month. Have no fear; it'll be back in the regular lineup in the next issue!



Chris:

Phone:

E-mail: president@tamr.org

AIM screen name: TAMRprez33

Snail-mail:

Joel (vice pres):

Phone:

E-mail:

vice_president@tamr.org

AIM screen name: TAMRvpJoel

Snail-mail:

Top Seven photos left out of the 2001 HB photo issue.

Inspired from a cubist painting at an art gallery by: Peter Maurath

#7. CZ trying to swallow a bowl of lime-green Jell-O.

#6. The Blue Angels in maneuvers over Omaha.

#5. Some old photo of a guy on a grassy hill in Dallas.

#4. An Amtrak passenger train featuring less than 6 express cars, arriving on time, in Cleveland.

#3. A fight breaking out between Alco guys and EMD guys.

#2. The Incident involving the railroad police.

#1. Last years Johnson family BBQ.

TAMR Membership goes electronic

LOGAN, OH and GENESEO, IL -- As of Monday, August 27, 2001, e-Membership applications will now be accepted in the Central Region. "This new class will be a great benefit to the TAMR, especially the Central Region at the moment," stated Chris Burchett, TAMR President. "It is my hope that the ability to accept e-Membership applications across the entire organization will start soon. This new class, available only in the Central Region, will be more or less a testing phase to see how everything goes. I feel confident that it will do extremely well."

"I am very excited about it," said Louis Granato III, TAMR Central Region Representative. "I too hope that it will be available to the entire TAMR."

The new class of membership will have the following benefits: right to vote, hold office, right to participate in conventions, a one-year subscription to the *e-Hotbox*, subscription to the regional newsletter (produced bi-monthly in the Central Region) via e-mail and/or the Website. It is basically the same as the Regular class, except publications will be sent electronically instead of the Postal Service. The dues will be \$8.00 (U.S.) annually. In addition, current Regular members will have the opportunity to log into the e-Member section. This will be an extended benefit of sorts to Regular members.

The Teen Association of Model Railroaders is a 501c7 non-profit corporation founded in 1964 by David Burris and is run by teens, for teens.

A Word from the Editor

Hi everyone,

Welcome to another issue of everyone's [in the T.A.M.R.] favorite publication. I would like to apologize for the delay once again in the date of the Hotbox and the delivery date, and I also would like to thank those of you who submitted pictures for the photo issue. Without you we would not have been able to produce the photo issue. I would also like to remind you to support your regional publications, and apologize to all of the regional representatives who are also trying to produce a decent publication and who are competing with the Hotbox for articles and photos. All of us need your, that's right, YOUR articles, photos, cartoons and other works of art. Please support your publications or they won't exist. Anyway, enjoy this issue!

-Charles W

A word from the Layout Design Artist

Hi everyone!

Well, I want to thank all you folks that sent in photos for the contest, the issue turned out great thanks to you! This month let's welcome Nick Wilson, our brand new News and Reviews director. He is making great additions to this newsletter and we are glad he can join us. Like Charles mentioned - sorry for the delays in the delivery of the Hotbox. We were right on schedule then classes started and we all know what kind of time that takes! Keep railfanning and till next time, see you trackside!

-Andy Inserra

Thanks to this month's contributing editors:

Peter Maurath
Dave Honan

Nick Wilson

Editor of the Month:

Nick Wilson gets this for his terrific new columns on news and reviews. Check them out starting on page 10. He needs your help so be sure and send in your news and reviews to him!

WANTED!

We are trying to put together a Wisconsin Central tribute and need your help. If you have photos of the WC or want to do an article or short story about them please contact Charles and Andy as soon as possible.

We also are thinking of doing a caboose special. If you have pictures or status reports please contact either Charles or Andy.

Be sure and prepare for the upcoming winter photo spectacular! Pictures now being accepted for this sequel to last month's smash hit photo issue!

TAMR DIRECTORY

Your Hotbox 2001 Crew!

Hotbox Editor---- Charles Warczinsky
charleswarczinsky@mail.com

Layout Design Artist –
Andy Inserra Andy_Inserra@tamr.org

News Director- Nicholas Wilson
emdsd40-2@juno.com

Reviews Director- Nicholas Wilson
emdsd40-2@juno.com

Columnist - Peter Maurath
Pencntrl1@aol.com

Contributing Editors –See page 5

Other Really Important People

President- Chris Burchett
president@tamr.org

Vice President- Joel Durfee
vice_president@tamr.org

Treasurer- Hans Raab
treasurer@tamr.org

Auditor - Andy Inserra
Andy_Inserra@tamr.org

TAMR Gov't Advisor- Brad Beaubien

Pivot Pin---- Tim Vermande
pivotpin@tamr.org

Promotion Manager---- Andrew Matarazzo
TAMRnymets@aol.com

Assistant Promo Mgr---- Joe Bohannon
GeepM@fcmail.com

Car Exchange
Doug Engler
Joe Bohannon

Department of Advisors
Chris Wagner
TAMRadvisor@hotmail.com

2002 TAMR National Convention Director
Andrew Matarazzo
TAMRnymets@aol.com

Video Exchange
TAMRvideo@aol.com
Lewis Ableidinger
Chris Burchett
Newton Vezina

Representatives and more
Northeast Region Rep.-Andrew Sabens
TAMR13@aol.com

Central Region Rep.-Louis Granato III
centralregion@tamr.org

Southern Region Rep.- Josh Trower
gg1_4935@hotmail.com

Western Region Rep.- open
Canadian/International Region Rep.-
Dane Nicholson
TAMR2860@Canada.com

One Mile Div. [MA]

Barry Simmons
bsimmons@capecod.net
Willie Roberge, Doug Engler
NY/NJ Metro Div.

Andrew Matarazzo
TAMRnymets@aol.com
Dimitros Fradelakis
Metallicarox54@hotmail.com

Great Plains Div. [ND, SD, MN]
Lewis Ableidinger
Soo201@hotmail.com

Golden Empire Div. [CA]-
Joe Bohannon
GeepM@fcmail.com

Heartland Div. [MO]
Joel Durfee
vicepresident@tamr.org

Catskill Mtn. Div. [NY]
Dave Mason
TAMR53@juno.com

Boston & Albany Div. [MA.]
Adam Sullivan
TAMR30@aol.com

North Wind Div. [BC]
Dane Nicholson
TAMR2860@aol.com

Air Line Div. [NC]
Josh Trower

Archivist
Mike Acree
TAMRMIKEA@aol.com

Webmaster
www.tamr.org
Dane Watson

Layout on A Shoestring Budget Conducted by: Peter Maurath

Where the Sidewalk Begins

Part 3,147a

Chocked full of wholesome variety, it's LOASSB! This month we continue work on our tutorial sidewalk with some expansion joints, and a little wear and tear.

Expansion joint is the technical term for the cast lines you see in the concrete. They're there to let the concrete expand and contract, due to climate changes, and keep from cracking where it shouldn't, and break apart. Modeling these lines in our IB (illustration board) sidewalk is easy. Using a hobby knife, and ruler we'll score them in.

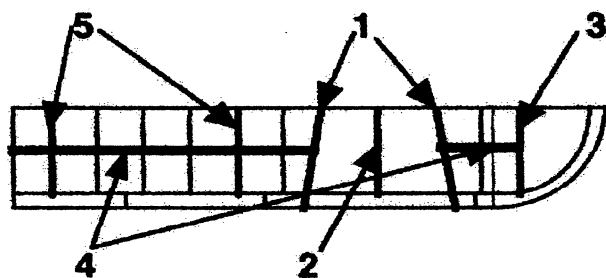
EXPANSION JOINTS

To keep everyone on the same page I'll number the important steps or lines as I go and match them to the figures below, also all scoring is done with a small ruler and a hobby knife. Start with the driveway apron. Outline the edges of it using a ruler to follow the gentle angle from the inside edge to the curb (lines 1, fig.1). Next add a joint right down the middle of the apron (line 2). Keep from crossing over the curb with this line. Now add some joints to the rest of the sidewalk. First add a joint at the start of the rounded corner perpendicular to the curb line, but not crossing over the curb (line 3) Next add a line scored down the middle of the sidewalk parallel to the curb line (line 4, fig. 1). Be sure not to carve into the driveway apron with this line, but stop and start, going around it. Finish the expansion joints by adding a series, perpendicular to the curb. These joints will also not cross the curb, or the driveway, and should be spaced about $\frac{1}{4}$ " apart for N scale (lines 5). For the rounded corner add a line slicing the quarter circle into two pieces, kinda like pie slices (line 6, fig.2). Make sure not to cross over the curb.

ALL CRACKED-UP

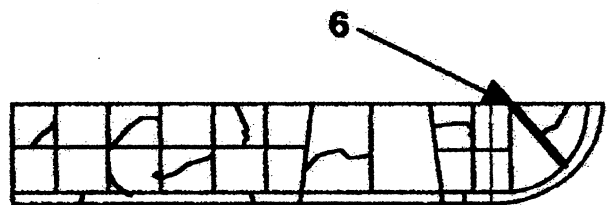
With the assorted expansion joints complete, you have a nice, clean, freshly poured sidewalk. Time to mess it up. Taking the hobby knife used to score the lines, randomly add a few cracks from joint to joint. Depending on how battered you want your sidewalk depends on how many cracks you add. Cracks are usually pretty random so there's no wrong way to do it (fig.2). Just be sure not to go overboard or cut too deep. That's all the space for this month. Join me next time when we'll finish messing-up our sidewalks with some weathering.

FIGURE ONE



This is your tutorial sidewalk.

FIGURE TWO



This is your tutorial sidewalk on cracks, any questions?

Layout on A Shoestring Budget Conducted by: Peter Maurath

Where the Sidewalk Begins

Part 456, 081a

Fully loaded, it's LOASSB! This month we finish-up work on the tutorial sidewalk with some weathering.

WHETHER TO WEATHER

The weathering can be broken down into two sections: aging of the sidewalk using chalks, and repair patches made by replacing layers of illustration board (IB). Start with the chalk weathering. The tutorial sidewalk is in good shape so weathering shouldn't be excessive. Choose a medium to dark gray chalk. If you only have black, that will work, just go lighter in your application. For those just tuning in, the chalks I talk about are the art class kind you would find in most art/craft stores, or even a good discount store. They're available in many combinations, of which I prefer the shades of gray, and earth tones.

CHALK IT UP

To weather the sidewalk you'll need an applicator. My tool of choice is an old toothbrush (stress on old). It's great for getting the chalk into all the grooves and you cannot beat the price. Q-tips or old paintbrushes will work as well. Start by rubbing the toothbrush on a medium gray chalk stick. Then rub the toothbrush lengthwise on the sidewalk. You will have to repeat this several times to get an even coating. To speed things up or to cover larger areas brush the chalk stick dust over the sidewalk to be weathered with the toothbrush, then rub it in the sidewalk. The basic weathering is complete, no need to seal it as the porous nature of the IB holds the chalk in place. If it's too dark, a standard pencil eraser will remove most of the chalk, if it's too light, just apply more chalk.

PATCH IT TOGETHER

We'll finish-up our weathering with a repair patch. First choose a square on the tutorial sidewalk. Using a hobby knife, scribe a little deeper around the edges of the square. Then gently pry the square away (use then knife if necessary). You should only remove the top few layers of the square. Take the square to a spare piece of IB and trace it's outline with a pencil. Follow by scribing the lines with the hobby knife. Add some weathering with a light gray chalk, then peel away the replacement square. Finish by gluing it over the bare spot on the tutorial sidewalk. Your patch is complete.

CLOSING

That closes this series on sidewalks. Thanks for following along, and even bigger thanks for anyone who made the tutorial. Join me next month for a new series on signs.

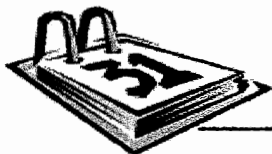
ASK GEEP M

Joe "GeepM" Bohannon

Ask GeepM unfortunately had to take another month off due to space restrictions this month but have no fear; it'll be back real soon! Remember to send ANY and ALL questions pertaining to model railroading to (Include name, and modeling scale):

Joe (GeepM) Bohannon,

GeepM@ATT.NET



Upcoming Events

A bumper crop of activities this year!

SEPTEMBER 14-16, 2001 (Rochester, NY) TAMR, Western New York Division "End of Summer Convention." Events include railfanning, layout tours, hobby store visits, videos, pizza party, and a special "G" scale rocket train event at Ridge Road Station. For more information, contact: Nick Wilson

SEPTEMBER 29, 2001- Southern Region Mini-Meet. Meet at Raleigh, NC Amtrak depot Saturday morning to ride train 73 to Salisbury, NC where we will spend the day at steam fest at the NC Transportation Museum and return to Raleigh on train 74. All members are invited. For further information contact Josh Trower(Southern Region Rep.) at GG1_4935@hotmail.com or Hayes Smith(convention coordinator)at cookiemonster@rrmail.com.

OCTOBER 5,6&7, 2001 (Rochester, NY) TAMR, Western New York Division fall convention. Events include, layout tour/operating, Model Railroad show at Rochester Institute of Technology, TAMR table at the show, railfanning, videos, pizza, and more! For more information, contact: Nick Wilson

NOVEMBER 2001 (New Jersey) TAMR New York/ New Jersey Metro Division Fall convention! Activities include a TAMR table at the Greenberg Model Railroad show (New Jersey Expo Center, Edison, NJ), visit a variety of member model railroads, railfan along the NEC, pizza party, train videos, and more! For more information, contact: Andrew Matarazzo, E-mail: TAMRnymets@aol.com

NOVEMBER 10 and 11, 2001 (British Columbia, Canada) TRAINS 2001 will once again be held at the TRAINS show, held on November 10th and 11th. Bring money for new toys and food! We will also again run the Digitrax DCC display. This was the best convention of 2000; so don't miss out this year. Please contact Dane Nicholson, or E-mail: TAMR2860@Canada.com by September if you plan to attend.

NOVEMBER 10 & 11th (Los Angeles-Pomona, CA). Great American Train show (w/booth). Railfanning. Contact Joe Bohannon: GeepM@ATT.NET

NOVEMBER 24 & 25th (Bay Area-Pleasanton, CA). Great American Train show (w/booth). Railfanning. Contact Joe Bohannon: GeepM@ATT.NET

And for those of you that really plan ahead...

JANUARY (dates to be announced) (Bakersfield, CA) 4th Annual "High Ball to the Loop". GEMRC Train show. A full day of Railfanning Tehachapi pass. Including the Tehachapi Loop. Contact Joe Bohannon: GeepM@ATT.NET

FEBRUARY 1-3, 2002 (West Springfield, Mass) Annual TAMR Winter Convention! This huge event will be held in conjunction with the largest railroad hobby show in the Northeast! (5 1/2 acres of trains under the roofs of three large buildings) TAMR table and layouts at the show. Contests, clinics, "Beach Party," and more! Another awesome multi-region event is being planned.

Ideas and suggestions are definitely welcomed! We also welcome any TAMR member who would like to join the Winter Convention Committee. Mark your calendars now! For more information, contact: Adam Sullivan, E-mail: TAMR30@yahoo.com or Newton Vezina, E-mail: TAMR19@aol.com or call

JULY 10-18, 2002 (New Jersey / New York) The Broadway Limited 2002. With under a year and 4 months away, the 2002 TAMR National Convention is scheduled to be held in New York and New Jersey, hosted by one of the TAMR's fastest growing, and active divisions! Get ready for the best model railroading and railfanning in New York and New Jersey! For more information, contact The Drew Crew, 2002 Andrew Matarazzo, Convention Director. E-mail: TAMRnymets@aol.com and Northeast Region Rep., Andrew Sabens, (Convention Director) E-mail: TAMR13@aol.com

THIS JUST IN!!! The 2003 TAMR National Convention will be held in northern California during the month of July 2003!! For more information, contact Ross McKnight, E-mail: TAMR4449@aol.com

Have a big railfanning bash coming up? Tell us here at the Hotbox and we'll let the world know about it!

TAMR News

Conducted by Nick Wilson

Hello all! First off, I'd like to introduce myself. My name is Nicholas Wilson and I'm the new guy putting together the News & Reviews sent in by fellow members of the TAMR. It looks like I'm going to be doing this for a while, so Happy Railroading!

Canadian Pacific To Introduce New Train Numbering System-

By Lewis Ableidinger

CPR has announced it will be adopting a new train numbering system in the near future. The new numbers will allow all employees to easily identify trains and their priority.

Here is the breakdown:

100 series = priority products (i.e. intermodal)

200 series = time sensitive products

300 series = grain products

400 series = manifest products

500 series = manifest products

600 series = potash and sulfur products

700 series = other bulk products

800 series = coal products

Engine 70 (C630) Will Not See Service On The A&M-By Andy Inserra

Engine 70 (C630) will not see service on the A&M. It was bought by a shortline that the A&M hoped to buy, but the deal fell through. It (the C630) is up for sale now. It will be used Thursday, September 6th for a crossing accident. The crash will be on Thursday morning around Sunset Street in Springdale. That will be the limit of its service on the A&M.

Springfield Area/Boston Line Area News-By Adam Sullivan

*Connecticut Southern (CSOR) has purchased 6 B39-8's from CIT Financial (CEFX) to replace their worn out ex-CR and NS B23-7's. These units are LMX 8511, 8530, 8552, 8554, 8565, and 8579. These units were originally purchase brand new by LMX and were "Power By

The Hour" leased to BN. Apparently, like the B30-7A (B) ones, they have little use for such now.

*CSX is continuing track work on the Boston and Berkshire Subdivisions.

*SD80MAC's on the Berkshire and Boston Subs: CSX 804, 806, and 810 have made it out to their former stomping grounds in August.

Well, that's all the news for this month's issue. A lot more should hopefully be coming next issue. Any news, please send to EMDSD40-2@Juno.Com or:
Nicholas Wilson

Thanks for everyone who made contributions and Happy Railroading!

TAMR Reviews

Conducted by Nick Wilson

Hello all! I'm Nicholas Wilson, the new reviews director (also the new news director). I will need more reviews as time goes on, so please send me any reviews you have to EMDSD40-2@Juno.com. Thanks!

Western New York End-Of-Summer Convention-By: Nicholas Wilson

The Western New York Division held it's End-Of-Summer Convention on September 14, 15, & 16 of 2001 and included many attractions, such as the rocket trains at Ridge Road Station and the Toy Train Swap Meet at Logan's Party House. First off, the guests (Newton Vezina & Adam Sullivan) arrived Friday night around 7:30 PM. They dropped off their things and then we headed for an operating session at my grandfather's Lehigh Valley Railroad, where Adam Sullivan used some of his equipment for operations. After that, we left at 9:00 PM and headed to Pizza Hut to pick up our pizza ordered earlier. We then brought it home and ate the pizza while watching videos the Newton Vezina provided for us, and then went to bed. The next morning we woke up at 8:00 AM and had left by 9:30 AM to go railfanning at the ever-popular Attridge Road grade crossing. While there, one train was sighted. Afterwards, we headed to Ridge Road station for the convention's main attraction, the Rocket Train Races. These races lasted for 2-3 hours with Newton Vezina videotaping the whole time (This tape is available through the video exchange). When that was over, we headed home for dinner. When my mom arrived, we found out it would be about 2-1/2 hours before dinner was ready, so we went railfanning at Bergen, where 2 trains were sighted. At about 8:15 PM, we headed back and ate dinner when we arrived. We then copied a tape and watched it, plus another video that we fell asleep to. We woke up the next morning at 8:15 AM and were out of the house by 9:00 AM. We headed through Bergen to a train show and spotted a train, so we jumped out and caught it as it roared by. After that, we went to the train show for a few hours, where I bought a CSX boxcar. We then headed to Attridge Road, where we sighted 3 trains, and then headed to the Railway Pizza Café, only to discover that it was closed, so we went to the Coldwater Station restaurant and ate there, seeing one train. After that, we headed to Bergen and saw 4 trains, including some UP stuff! After that, it was 3:00 PM, and we headed home. Newton dropped me off, we said goodbye, and then they left. And that was the whole convention. I could only have wished that it had lasted longer, although my previous 5-day summer convention also seemed to be over within hours. The convention attendee's rating: Awesome!

TAMR ON THE WEB

What could be better than free stuff?

The TAMR has an active presence on the Internet, and we hope our members will take advantage of what we have to offer. All of this is included in your membership, so it is free. Yes, that's right, it won't cost you a dime!

First is our own site, www.tamr.org. Here you can find out what's going on and see pictures from conventions. If you have a picture to add, or would like your own web site linked, contact us. We are also always looking for members who would like to help with the site (no experience is required). If you would like to have your own page at the site, we'll help you with that, too. For more information, contact webmaster@tamr.org.

Second is our e-mail list. The list does not replace the *Hotbox*, but does provide a fun way for members to get the latest news and make new friends. You can join the list in several ways:

- send a blank e-mail to TAMR-subscribe@yahoogroups.com
- on the web, go to <http://groups.yahoo.com/group/TAMR>. (This is most useful if you are already registered with E-groups or Yahoo).
- send an e-mail to pivotpin@tamr.org and request an invitation.

Note: Yahoo has recently bought E-groups. Most URL's will take you to a Yahoo page. Until things settle down, you may experience some difficulty using the site. Contact the Pivot Pin if you have a problem.

Yahoo also has a "files" area where you can find the TAMR logo, some more pictures, and other information. Note: the list is only open to TAMR members, although a few exceptions occur for former members or industry contacts.

Third, you can have an e-mail address "@tamr.org." This is a forwarding address, so the e-mail is sent to another address that you already have. (It is possible to get a POP or stand-alone account, but there is a charge associated with this). For information, contact treasurer@tamr.org.

Check us out on-line!

www.tamr.org

And while on the web, stop by our sponsor's site!



**J AND J BASIC HO
LAYOUTS**



www.ho-only.com

They give discounts to all TAMR members