

The Heartland Flyer

Joel Durfee-Editor

Volume 1-Issue 1 Feb./March 2000



The official Publication of the Heartland Division of the Teen
Association of Model Railroaders

Railroad News-

Amtrak- Amtrak has expanded it's Mail and Express handling on the Chicago-St. Louis-Kansas City train. Train 304-306 have picked up service. In the summer of 98, the train would only carry a boxcar, and maybe some road railers.....but service has expanded. The train usually is seen with 2-3 boxcars on the head end, and a set of road railers on the tail end. Some of these trains have also been seen with up to 2 locomotives, instead of the 1 usual locomotive.

BNSF-As most of you heard, BNSF and CN have merged, it was in the *Hotbox* and in many railroad magazines.

Union Pacific- The old U.P. has taken over operations of most Daimler-Chrysler operations in the West. BNSF ran a lot of Chrysler's operations in the st. Louis area. Under the new contract, Chrysler will run trucks over to U.P.'s Dupo yard, and be shipped, North and West, why they don't just ship them downtown, I don't know.....and that's your railroad news!!

Product Review-

My product review maybe a bit outdated, but, I was really satisfied with this product, it's the Walthers MHC Boxcar, yes, it is outdated, but, just in case any of you guys have never seen or have heard of one of these, here's your chance.

This model is very highly detailed, decals, ladders, numbers, etc. were all correct. The paint is sharp and crisp, without much flaw. The cost of the model is 19.99, yes, a bit expensive for one car, but the detail is awesome! I bought 6 of them for my "St. Louis Flyer" and they look great!

The model is plastic, but is heavily weighted, for smooth operation. The

underbody is detailed fairly well, I added a few minor things to it, but overall, the detail is superior. The truck side-frame is plastic, with about as much detail as you can get out of a plastic molding, the wheels are blackened metal, they sounds really great running over nickel rails, almost like the real thing!

The only thing I really didn't like about the item, was the knuckler couplers that came with it. It is a style similar to a McHenry style coupler. The spring in which the coupler operates is plastic, and is really easy to break when running on sharp curves, or if you working on it. I replaced the couplers on mine with Kadee.

In conclusion, the Boxcar is really a nice model, if you're an Amtrak buff like me, and like big long passenger trains, or just need a little spice for your inter-city train, the Walther's MHC boxcar is right for you!

-Joel Durfee

VIDEO EXCHANGE IN THE TAMR

By: Newton Vezina

Greeting, Heartland Division TAMR members!

I'd like to take this opportunity to share an idea with the members of the "TAMR Heartland Division" regarding the very active "Video Exchange Program". Some of you might've heard about the "VidEx" and for others reading this article, this might be the first time you've heard about this exciting program. To give you a brief background, the idea of the exchanging videos was founded and established in the TAMR during the early 1990's, and has been going strong ever since. Essentially, members involved in the "Video Exchange" trade home videos of model railroading and railfanning activities with fellow TAMR members at a distance. Active videos in the exchange include footage of member layouts, railfanning, divisional, regional, and national TAMR conventions, edited "music videos" by fellow TAMR members, funny skits, etc.

"VidEx" makes it possible for someone who lives (for example) in "CSX country" to exchange and receive a video from a person who railfans the Union Pacific. We also use videos as an effective form of communication. Have you ever wondered what it's like to attend a large or small TAMR convention? Video Exchange is a great way to experience the fun of TAMR conventions. There are conventions held all this organization, however; for most of us who live too far from a specific TAMR convention can still experience the convention in the comfort of your own home via video! We simply bring the convention

to you! Presently, the TAMR convention library includes footage of 4 national

convention and dozens of regional events that took place all over the United States. We've also received a lot of great videos from members who held "mini-conventions" (conventions involving 2-3 attendees). The biggest divisions in the TAMR have begun with these types of conventions.

Almost all of our participants have access to a camcorder, but this is not a requirement to be involved. If you don't have a camcorder, it's usually easy to borrow one. One of the best ways to "rent" a camcorder is to contact your local cable company and find out if there's a "video access program" (a.k.a. "Public Access") available to the community. Most public access stations require an initial free course in operating the equipment. Usually funded within the state, there shouldn't be any charge of fee to borrow equipment according to FCC regulations.

Here's some suggestions and ideas, already tried by fellow TAMR members: you can exchange videos of model railroading and railfanning adventures with fellow TAMR members who live all over the U.S. and Canada. If you are into modeling trains, you can set up with someone who has a layout and techniques on how to build that layout. If you would like to see how divisional, regional, and national conventions are set up, you might want to take a look at one of many convention videos. Video Exchange is a very effective way to document and promote railroading events, all over the TAMR membership. Be

creative!!

The only cost associated with participating in the Video Exchange is the cost of video tapes, and postage. There's also the option of purchasing video directly from the TAMR video library, however; this is only optional, but available upon request.

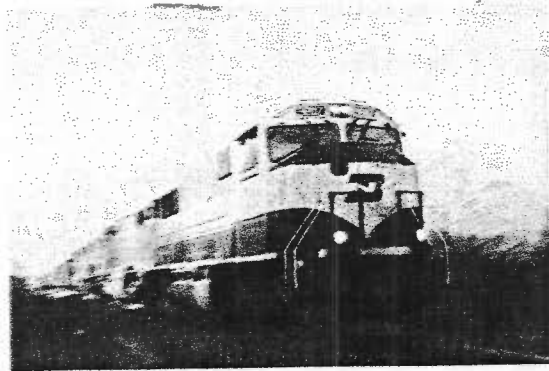
I regularly correspond with Joel and definitely look forward to meeting him at a future Heartland Division convention! He has already seen TAMR conventions on video. The Heartland Division is awesome, and has one of the best leaders in the TAMR managing it!! Your leadership is the best, and Joel has some neat things planned for the Division. I definitely encourage you to get involved in this division so you don't miss out!! Until next time.....

Happy Railroading

for more information on the TAMR video exchange, contact:

TAMR Video Exchange
c/o Newton Vezina
76 Roy Street
Springfield, MA 01104
e-mail, TAMRVideo@aol.com

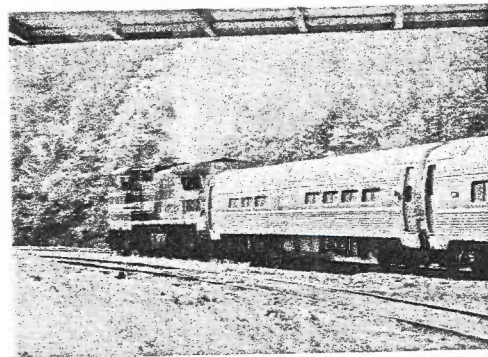
Photo Gallery!



a BNSF coal train speeds through Affton Missouri (St. Louis) April 15, 1999. An ex-BNSF SD70MAC is leading the way, with 2 SD70MACS and an Oakway SD60 trailing.
-photo by Joel Durfee



another BNSF coal train goes through the same location....this time with 5 C30-7's on the head end, and 3 C44-9W's on the tail end, the train is heading up about a 3 percent grade.-photo by Joel Durfee



Amtrak #304 pulls out of Kirkwood Station. B32-8WH #503 is on the point-photo by Joel Durfee

ARTICLE CONTRIBUTIONS

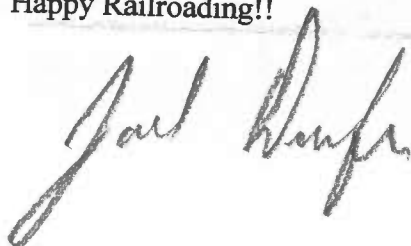
This newsletter depends on you, the reader. If you don't contribute, than *The Heartland Flyer* will not reach it's maximum potential. Don't miss out! Contributions can include anything from layout reviews, to drawings. Most anything that you send will be published, and I would love to hear from all of you.

If you would like to contact me for any other questions, please feel free to do so, it will be highly appreciated!

Joel Durfee
103 South Hampton
St. Louis Missouri 63123
636-477-0582

Until the next issue, take it easy, stay cool,
and keep railfanning!

Happy Railroading!!

A handwritten signature in cursive script that reads "Joel Durfee". The signature is written in dark ink and is positioned below the "Happy Railroading!!" text.

Joel Durfee

Editor

Heartland Division Newsletter: February 1999

Dear Heartland Division Members,

Greetings! My name is Joel Durfee, I am the new Heartland Division director. It's a great honor to be able to take this job, in such a fine organization for Teenage Model Railroaders!

This is the first official publication of the Heartland Division. I will be making a bi-monthly newsletter similar to the pilot, which will provide valuable information on important Central Region dates, Heartland Division news, Railroad News, Product Reviews, and Photos. I am inviting you to join me in the making of this publication. I would enjoy seeing; photos, articles, Product Reviews, and Railroad news from each one of you!

Before we go further, let me give a little info about myself. My name is Joel Durfee. I live in St. Charles (St. Louis) Missouri. I am 14 years old and will be 15 in March. I attend Francis Howell Central High School, and am currently in my Freshmen year. I play football and track at my school, and am a member of some of the clubs offered at my school. I railfan mainly Norfolk Southern, BNSF, UP, and Amtrak. I have several different interests in the railfanning area, particularly the Kansas City Southern, and Cotton Belt Railroads, but since I live in St. Louis, it's kind of hard to me to railfan the KCS, but I often see SSW stuff on the UP.

My favorite railfanning spots in the area are Kirkwood Station, Belleville Illinois, McKinley Yard (NS), and any other place where there are lots of trains!!! I like most types of trains, and yes, even Amtrak, which is running late most of the time.

My goals for this division is simply to be a good leader for you guys, and also, make the TAMR more fun and rewarding for you. I would like to get all of you involved in the TAMR's awesome and exciting activities!

I will also hold mini-conventions within the Heartland Division.....all of you are invited! Any member throughout the TAMR is allowed to come, so we can have quite a big group if a lot of people show up! I hope that you will take advantage of what the Heartland and Central Divisions have to offer! I want to make the TAMR Heartland Division an awesome experience for all of you. I invite any of you who live in the St. Louis area, or are stopping through town to give me a ring, and we can go railfanning if you would like. We can share places of interest in the area, as well as go to some of your favorite train watching spots! As I said, I would like the Heartland Division to be a friendly, homely, and fun environment, and if we work together, we can achieve anything!

I would like to hear back from all of you, as to what your goals and interests are out of me as a leader, and out of the Heartland Division as a whole. I invite you all to contribute stuff to the Newsletter, come to the conventions, and most of all, have fun! Railfanning can be boring when the trains are not around, but as a group, we can make it a fun, rewarding, and a meaningful experience! So, with that said, I hope that I can serve you the best way that I can, both as a leader and as a friend. If you would like any of your articles or photos to be placed in next month's newsletter. Send them to me, I would love to hear from you!

Happy Railroading!

Joel Durfee